

**IBP CONSTRUCTION CONSULTANTS
(JOHANNESBURG) (PTY) LTD**

Quantity Surveyors, Project Managers and Engineering Cost Consultants



Johannesburg

Physical: 367 Long Avenue | Ferndale | Randburg | 2194

Postal: P.O. Box 4569 | Randburg | 2125

Email: reception@ibp-jhb.co.za | Tel: +27 11 781 0394 | Fax: +27 11 781 0396

IBP Company Background

Organisation

IBP Construction Consultants is an empowerment professional practice having been established during 1999. It is our mission to deliver a high level of quantity surveying, project management and cost engineering service to our valued Clients and also to build a dynamic and progressive company in the process.

The director of the company is Nigel Forfar who has extensive (more than 30 years) experience in all spheres of building and engineering construction. Recognising the inequities of the past and the challenges we are faced with towards empowerment and distribution of resources and opportunities to all role players in a democratic South Africa, we are working towards achieving these goals, bringing together the expertise from various individuals and simultaneously meeting the demands of the market.

The strength of our practice lies in our ability to provide our Clients with a personalised service from the respective director across the broad spectrum of building and engineering projects ensuring that quality standards are upheld at all times and under all circumstances. Since our establishment, we have striven to develop ongoing relationships with our Clients and in the process have been successful in securing repeat business from several of our Clients on an ongoing basis.

As the business has grown, the maximum use of technology has been made and the use of state of the art equipment is consistently maintained. This philosophy has been applied both in terms of specialised software packages and digitised measuring systems that are being utilised both in the office as well as on site.

Our company has the technical ability and resources to provide a wide range of quantity surveying, project management and cost engineering services in all of the fields as listed below.

Project Types

Building

- Infrastructure Roads And Services
- Office Developments
- Retail Developments
- Industrial Developments
- Educational Institutions
- Medical Facilities
- Protection Services
- Residential Developments
- Sports Facilities
- Leisure Developments

Engineering

- Mineral Processing
- Food Processing
- Petrochemical
- Mining Process Plants And Furnaces
- Civil, Mechanical, Structural, Electrical, Piping And Instrumentation Projects
- Roads, Services And Dams
- Mining Surface Developments
- Procurement And Contract Administration



IBP Services

Services within the above fields can comprise any or all of the following:

Financial and Commercial

- Project Viability Studies
- Preparation Of Cost Estimates
- Cash Flow Forecasts
- Cost Efficient Design Advice
- Tender Negotiations And Interviews
- Tender Assessment And Analysis

Contractual

- Develop Procurement Procedures
- Procurement And Tender Documentation
- Preparation Of Contract Documentation
- Analysis And Settlement Of Contractual Claims

Post Contract

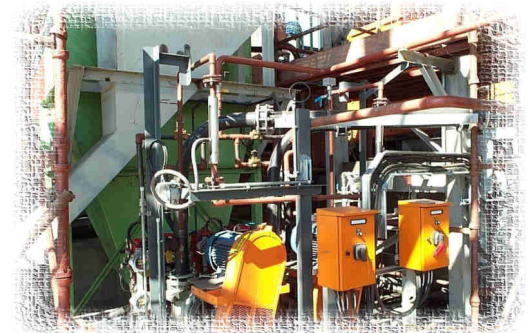
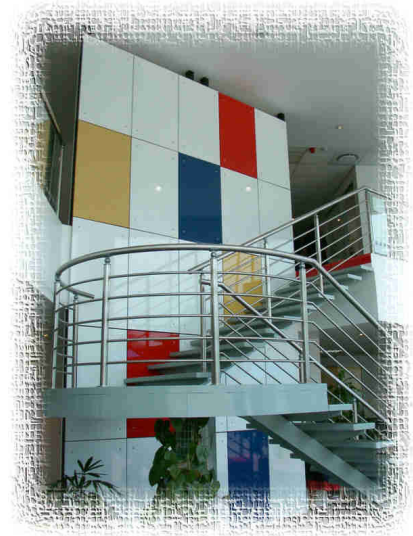
- Financial Control From Inception To Completion
- Valuations For Payment Certification
- Financial Evaluations Of Variations
- Contract Administration
- Negotiation And Agreement Of Variations
- Project Financial Reporting
- Escalation Calculations
- Agreement And Settlement Of Final Accounts

Project Management

- Programming
- Client and professional team liaison
- Co-ordination of supplies
- Expediting
- On site co-ordination and management
- Contractual and budgetary advice
- Completion documentation
- Finalisation of completion issues

In addition to the abovementioned, we are able to provide the following specialised services:

- Building Surveys
- Building Valuations
- Project Audits
- Procurement And Contract Administration
- Building And Office Fit Outs
- Material Management



IBP Projects

The directors of IBP are committed individuals providing an unbiased professional service on the crucial elements of time, cost and quality. Some of our more recent projects are listed below:

Mining and Heavy Engineering

- Board and Pillar mechanised mining contract at Bleskop Mine
- Electrical Work To Furnace No 3 for Impala Platinum
- Civils, Mechanicals, Electrical, Piping and Instrumentation to new Sintering Furnace and Pelletising Plant for Samancor
- Structural steel and platework for Anglo Platinum at Maandagshoek
- Upgrade Stacker Reclaimer For Ingwe
- Refurbishment of the Ammonium Sulphate Plant for Kumba Resources at Iscor, Newcastle
- Corrosion Protection at Grootegeluk Mine for Kumba Resources
- Procurement services for new Hydromet Plant at Chambishi for Avmin
- All electrical, mechanical, piping, instrumentation and civil work for Base Metal Refiners Expansion Project for Impala Platinum at Springs
- IFM Project at Buffelsfontein
- Medupi Power Station
- Kusile Power Station
- Glass Furnace Rebuild for Nampak Wiegand Glass
- Tenke Expansion Project, DRC
- Upgrade of Kendal Pump Station, Mechanical Work for Transnet Pipeline
- New Brewery for SAB Miller in Nigeria

Public Sector

- Leeuwkop Prison – Maintenance Project
- Diepkloof Prison – Maintenance Project
- Alterations and Additions to Krugersdorp Prison
- Ditsobotla Magistrate Courts
- New Library, Orange Farm
- Lecture Centre For National Centre of Occupational Health
- Mampudi Primary School in Vosloorus
- Nokuthula Special School
- Hyde Park High School

Alterations and Additions

- Skylink for Afrox
- Extension to Head Office for Afrox
- Amalgamated Appliances for Transnet
- Warehouse & Offices for SAB
- Print House, Linbro Park for Paarl Media



Residential

- Hosane House, Norwood
- House Scholtz, Ruimsig
- 12 Cluster Homes, Bedfordview
- 70 Residential units in Houghton, value R55m
- House Grey
- Student Flats, Bloemfontein, R160m
- 10 On Grosvenor (Apartments)
- 300 Student Flats in Hillcrest, Pretoria, R111m
- Upmarket house, Meyersdal, value R22m
- 32 On Melville, 14 Upmarket units, value R20m
- Grosvenor Apartments (10 units), R11m

Offices

- AECI Coatings, Linbro Park
- Coin Security, Longmeadow
- JCB, Parktown
- Barclays, Illovo
- Showroom and Offices for Daimler Chrysler
- Oxford Road for Tiber Projects
- EKV Attorneys Head Office
- Refuel Carriers Head Office
- Refurbishment of Corporate Place Offices
- County Lane, Pretoria
- Massmart Head Office
- ABSA Capital Office
- Rosebank Corner
- Illovo Edge Office Block
- 52 Fricker Road Offices
- New Offices for Abacus in Irene
- Albury Office Park

Office Fit-Out Projects

- Barclays Illovo, Phase 1 and 2
- Massmart New Head Office

Medical Facilities

- Brenthurst Clinic
 - New Doctors Rooms
 - Alterations to Clinic
 - Upgrade Phase 2A
 - Upgrade Phase 2B
 - Upgrade Phase 3A
 - Upgrade Phase 3B
 - 1st Floor Upgrade
- Pretoria Provincial Hospital
 - JV to assist on final account
- Carstenhof Clinic – alterations & additions
- National Centre of Occupational Health – Lecture Theatre
- Direct Medicines – alterations & additions
- Vryburg Hospital – JV to assist on final account
- Kensington Clinic
 - Upgrade Phase 1
 - Upgrade Phase 2
- Flora Clinic – alterations



Office And Warehouse Industrial Developments

- Peugeot, Linbro Park
- Provicom Electronics, Linbro Park
- Worldwide Logistics, Longmeadow
- Munters, Meadowdale
- Hytec, Meadowdale
- GLV, Linbro Park
- Paarl Web, Linbro Park
- Electrolux, Germiston
- Siemens, Midrand
- Dismed Medicals, Midrand
- Altech, Linbro Park
- DC Africa Silicones, Meadowdale
- ACDC Distribution Facility
- Boogaloos Production Facility
- ALS Chemex Industrial Facility
- Manufacturing Facility for Le Sel Research
- ZF Zachs SA Industrial Facility
- Illovo Sugar Industrial Facility

Project Management

- Barclays Offices, Illovo.
- Munters Industrial Development, Meadowdale
- Projects Concern Workshops and Offices
- Worldwide Logistics Warehouse and Offices
- Danisco/Linyanti Warehouse and Offices
- Thrupps Shopping Centre Refurbishment
- Upgrade Momentum Towers East for Transnet
- Thrupps Shopping Centre refurbishment, Illovo
- Industrial Development for ZF Sachs, Meadowdale
- Residential Development in Bedfordview (Condor South)
- Office Development Route 21 Office Park for Org Geldenhuys
- New facility for Peugeot SA
- Industrial Developments in Longmeadow for Carlop Properties
- Refurbishment of Epsom Downs Shopping Centre for RMB Properties
- Industrial Developments on Erven 275/276 Meadowdale for DC Africa Silicones
- Office Development, Irene
- National Stainless Steel Centre
- House Lopes
- Land Rover, Longmeadow
- Alterations & Additions to Chep SA
- Altech Secure Card Facility, Linbro Park



Retail

- Boardwalk Shopping Centre, Richards Bay
- Russel Cambell Motor Cycles, Longmeadow
- Refurbishment of Grayston Shopping Centre
- Refurbishment of Thrupps Shopping Centre
- Alterations & Additions to Boskruin Shopping Centre
- Refurbishment of Epsom Downs Shopping Centre
- Rosebank Corner

Africa Projects

- E&P Office Tower Building, Luanda, Angola
- Repairs & Renovations Estimate for Barclays, Lusaka, Zambia
- Mineral Sands Project, Moma, Mozambique
- Alterations & Additions, Rosh Pinah, Namibia
- Infrastructure Project at Diamond Park, Gaborone, Botswana
- Diamond Cutting Facility at Diamond Park, Gaborone, Botswana
- Katanga Mine, DRC – Copper Expansion
- Tenke Mine, DRC – Copper Expansion
- New Brewery for SAB Miller in Nigeria
- LMC Facility Block and New Office Facility Angola
- Electrical Infrastructure to Gold Mine, Ghana
- Herman Gmeiner School, Angola
- Benga Coal Handling, Mozambique
- Kapulo Project, Open Cut Copper – DRC

IBP Johannesburg Director In Charge

Name: **Nigel Forfar**
 Date Of Birth: 7 June 1955
 Qualification: MRICS, PrQS, PMAQS, AAARB, PrCPM
 Position: Director

Nigel came to South Africa during 1975 and joined LTA Building, working on a variety of large building projects until 1979. He then returned to England to further his studies working part time for the London Borough of Ealing on refurbishment projects in the West London area. After three years and on completion of his studies, Nigel returned to South Africa to join LTA Building as a Senior Quantity Surveyor. After a further five years he joined the professional practice of Hickman, Bjorkman & Bower again studying part time towards obtaining his RICS in 1993. Nigel was made an Associate Partner in 1994 and a full Partner in 1995.

At the end of 1996 he joined the international practice of Turner & Townsend before deciding at the end of 1999 to be a founder member of IBP Construction Consultants. Nigel is continuing to further his academic qualifications and has completed his studies with the Association of Arbitrators.

A summary of Nigel's most recent specific experience includes:

- Commercial office developments for AECI in Woodmead valued at R9m, R14m, R40m and R45m respectively.
- Electrical and Piping Installations for the Upgrade of Mining Pond D at Richards Bay Minerals to the value of R30m.
- Electrical and civil works for surface structures for the new Beatrix mine to the value of R80m.
- Mine hostels and accommodation at Karee Mine in excess of R20m.
- A range of mining surface structures at Oryx mine to the value of R15m.
- A number of public sector projects such as Malopo Technical College, JHB Central Police Station and Alexander Police Station ranging in value from R3m to R50m.
- Adjudication of contractual claims on a number of different projects.
- Electrical and instrumentation for furnace No 3 for Impala Mines with an approximate value R120m.
- Civil works for overland conveyors and evaporation structures for Koornfontein Mines to the value of R50m.
- Steel and platework at Concentrator Plant for Maandagshoek Mine.
- Piping contract final account at S.A. Chrome, Horizon Project.
- Project Management of the upgrading of Thrupps Shopping Centre for Transnet.
- Project Management of a number of industrial developments for various companies including Munters, Danisco, Projects Concern, etc.
- Office fit-outs for Barclays in Johannesburg, Cape Town and Durban.
- Evaluation of Transnet's property portfolio to the value of R 2.9 billion.
- Boardwalk Shopping Centre in Richards Bay for Transnet.
- Upgrade to the Booyens Hotel to expand hotel and conference centre.
- Various surface structures at Karee Mine including all associated roads, services and haul roads.
- All civils, structural, electrical, instrumentation, mechanical installations and piping for the upgrading of the Base Metals Refineries of Impala Platinum to the value of R180 million.
- Industrial development for Paarlweb printing facility at Linbro Park, valued at R54 million.
- Upgrade of Katanga Copper Mine facilities Phases 1 & 2 and Roaster Line 1 in Kolwezi, DRC.
- Pre contract work on the City Lodge Grand West in Cape Town.
- New offices for ABSA Capital, Sandton and Annex building upgrade combined projects in excess of R300 million.
- 300 Student flats in Hatfield, Pretoria in two separate schemes, R111m.
- 70 Residential units in Houghton, project value R55 million.
- Industrial warehouses in Pomona of 12 000 m².
- Phase 2 Tenke, DRC.
- Medupi and Kusile Power stations structural Steel R2.2 billion.
- Kusile Power Station electrical reticulation.
- 390 Student apartments, Bloemfontein, R160m.
- Medupi Power Station – civils contract remeasurement.
- Grosvenor apartments (10 units), value R11m.

Nigel also has been a board member of various committees and charities including the RICS South Africa branch.